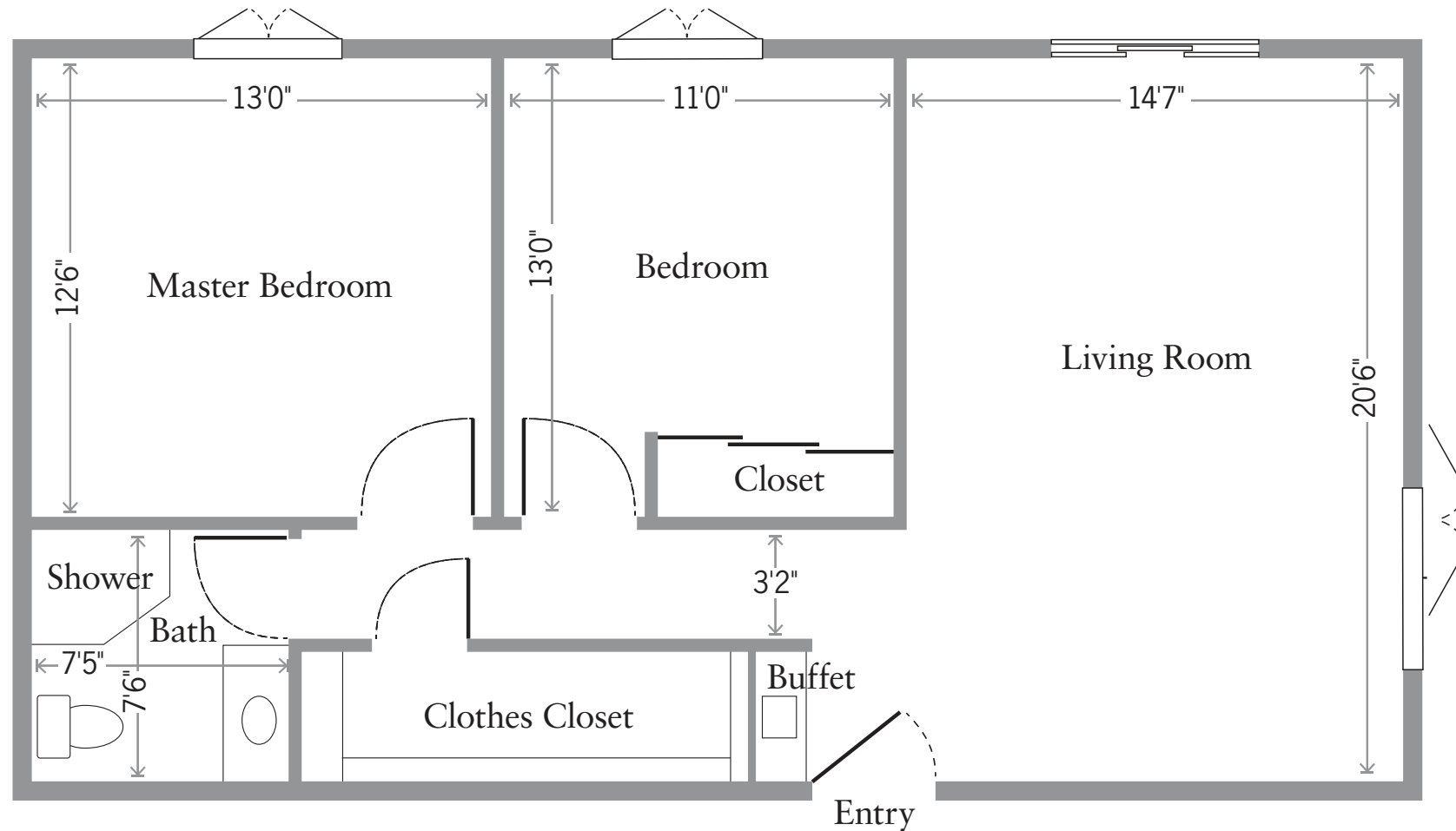


*approx. 860 sq ft*  
**Two Bedroom, One Bath**

Features of your new home:



- Kitchen with refrigerator, dishwasher, electric range and oven, vent hood, stainless steel sink and garbage disposal
- Bath features wide entry door, easy-access shower, built-in vanity, medicine cabinet and safety grab bars
- Energy-efficient gas furnace with radiant heat
- Individually controlled, programmable thermostat
- Private ground-level patios or private sunrooms, based on apartment selected
- Carpeting and hardwood floors in living areas, vinyl flooring in kitchen and baths
- Ample closet space
- One reserved parking space per apartment
- Resident call system
- Smoke detector and sprinkler system
- Added soundproofing and fire-rating on common walls
- Pre-wired for cable TV with in-house TV channel
- Pre-wired for phone with in-house phone service
- Access to convenient laundry rooms
- Small pets welcome

*The Sequoias*

PORTOLA VALLEY

501 Portola Road, Portola Valley, CA 94028  
 (650) 851-1501 [www.sequoias-pv.org](http://www.sequoias-pv.org)