

approx. 1,089 sq ft
**Two Bedroom, Two Bath
Duplex**

Features of your new home:

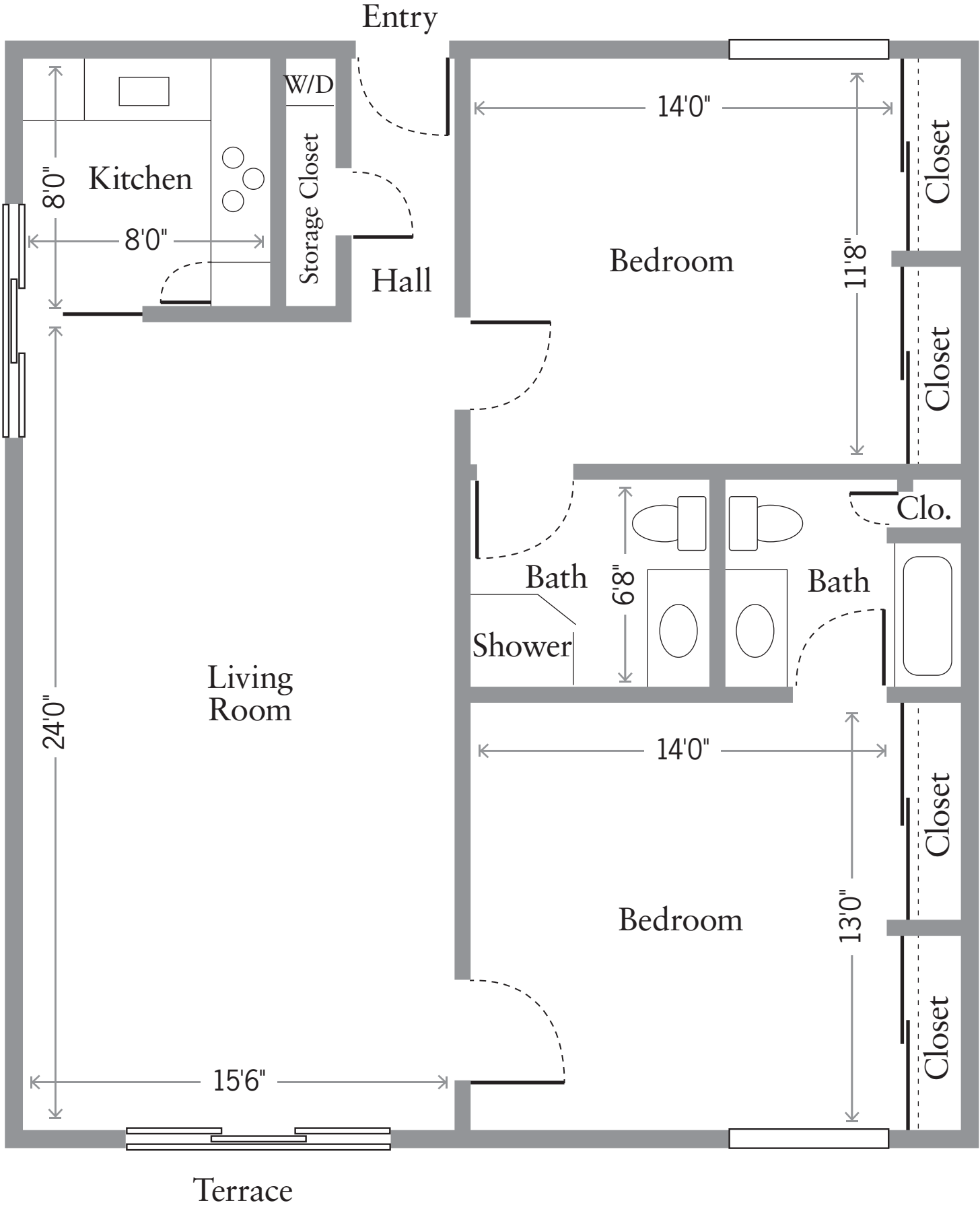
- Kitchen with refrigerator, dishwasher, electric range and oven, vent hood, stainless steel sink and garbage disposal
- Bath features wide entry door, easy-access shower, built-in vanity, medicine cabinet and safety grab bars
- Energy-efficient gas furnace with radiant heat
- Individually controlled, programmable thermostat
- Private ground-level patios or private sunrooms, based on apartment selected
- Carpeting and hardwood floors in living areas, vinyl flooring in kitchen and baths
- Ample closet space
- One reserved parking space per apartment
- Resident call system
- Smoke detector and sprinkler system
- Added soundproofing and fire-rating on common walls
- Pre-wired for cable TV with in-house TV channel
- Pre-wired for phone with in-house phone service
- Access to convenient laundry rooms
- Small pets welcome

The Sequoias

PORTOLA VALLEY

501 Portola Road, Portola Valley, CA 94028
(650) 851-1501 www.sequoias-pv.org

Two Bedroom, Two Bath Duplex
approx. 1,089 sq ft



This is a sampling of floorplans available. Floorplans are drawn to an approximate scale of 1"=4' and are for representative purposes only. Actual floorplans may vary.